

THE BEACON

C L E V E L A N D

⌘ A STARK ENTERPRISES AND DESSLER JOINT VENTURE

PROFESSIONALLY MANAGED BY

STARKLIVING

⌘ A STARK ENTERPRISES COMPANY

BE GUIDED HOME

BE FULFILLED

BE ACCOMMODATED

BE CAPTIVATED

BE IN THE CENTER

BE SELECTIVE

BE WELCOMED

BE FIT

BE SOCIAL

BE CONNECTED

BE A GUEST

BE A GOOD
COMPANION

BE ENERGIZED

BE SECURED

THE BEACON

C L E V E L A N D

• A STARK ENTERPRISES AND DESSLER JOINT VENTURE



BE GUIDED HOME

Discover a new standard of living at The Beacon, downtown Cleveland's most premier community. Centrally located in the heart of the Central Business District, The Beacon is conveniently situated to allow you to be fully integrated with all that Cleveland has to offer. The Beacon offers a multi-dimensional living experience transporting you from city entertainment and dining to rest and relaxation of your home by simply stepping through our front door.



BE FULFILLED

Everyone is unique with their own style, so choosing a floor plan that meets your needs and fits your lifestyle is important. With over 180 suites to choose from, The Beacon offers Blonde and Gray color schemes with clean, comfortable layouts, so your space functions properly for all your daily activities.

BE ACCOMMODATED

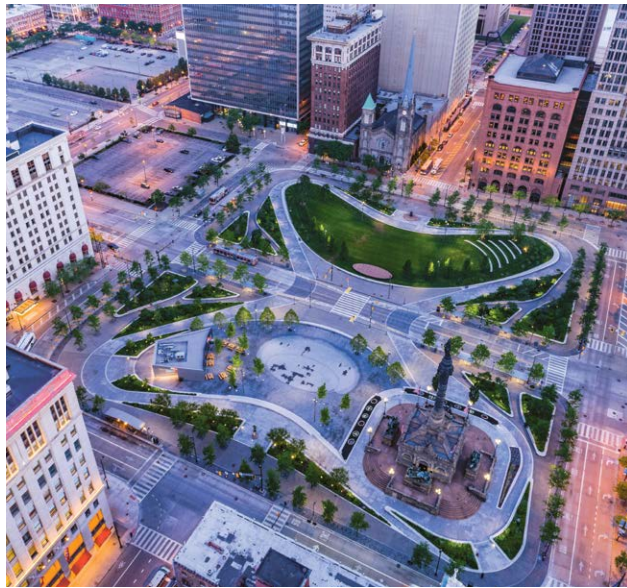
The Beacon, located in the heart of the city, is always here to welcome you home or comfortably send you off to take on the day.



BE CAPTIVATED

Offering a view like no other, our Sky Deck showcases Cleveland from a perspective you've never seen before. From the Annual Air Show on Labor Day to the Festive Holiday Lights in December and all the days in between, experience it for the first time from our point of view





BE IN THE CENTER

Within walking distance, enjoy the convenience of local grocery stores with all the products to make your kitchen your own as well as nationally acclaimed restaurants home to award winning chefs tucked in the walkable, exciting East 4th street. Whichever your cooking style or favorite meal, there are many nearby options to fuel your days and ease your evenings.



TWO BEDROOM • TWO BATHROOM
SERIES 01



ONE BEDROOM • ONE BATHROOM
SERIES 08



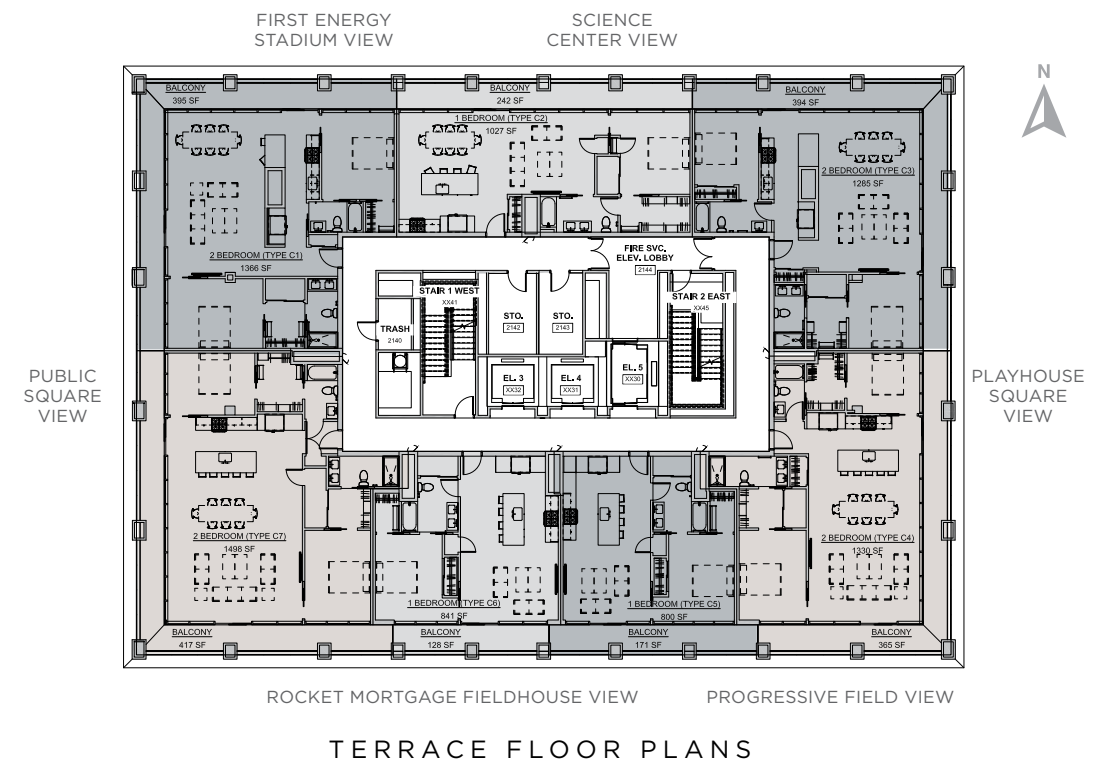
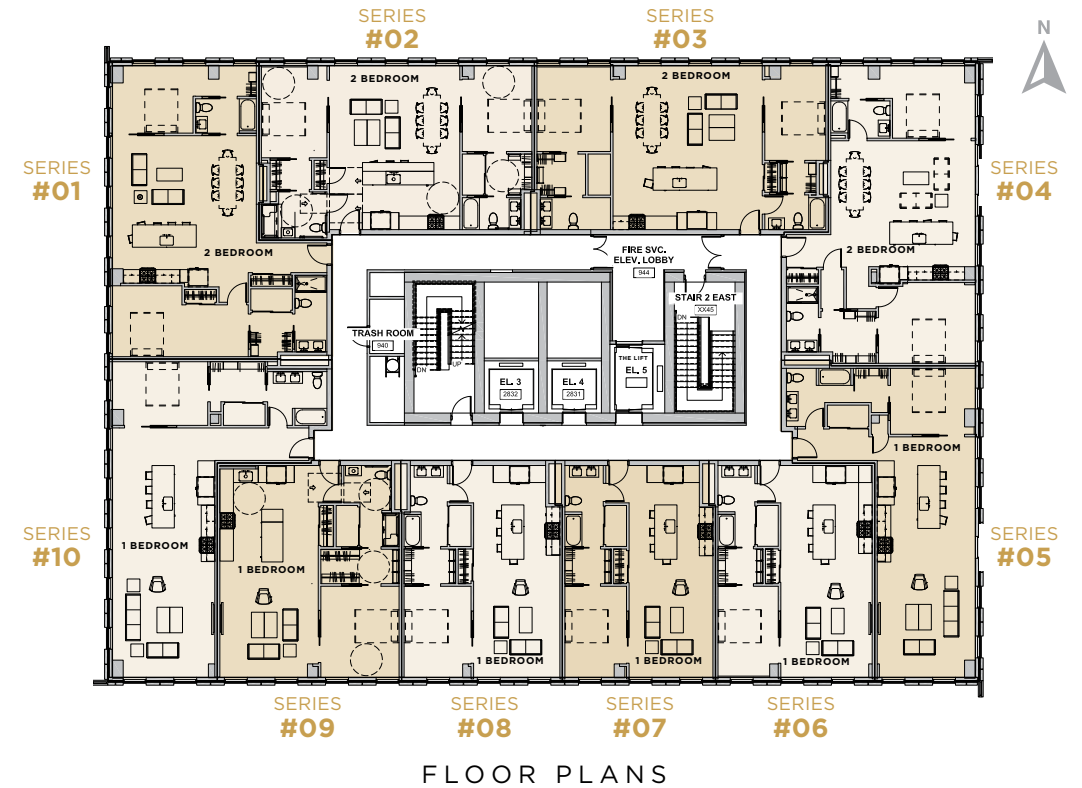
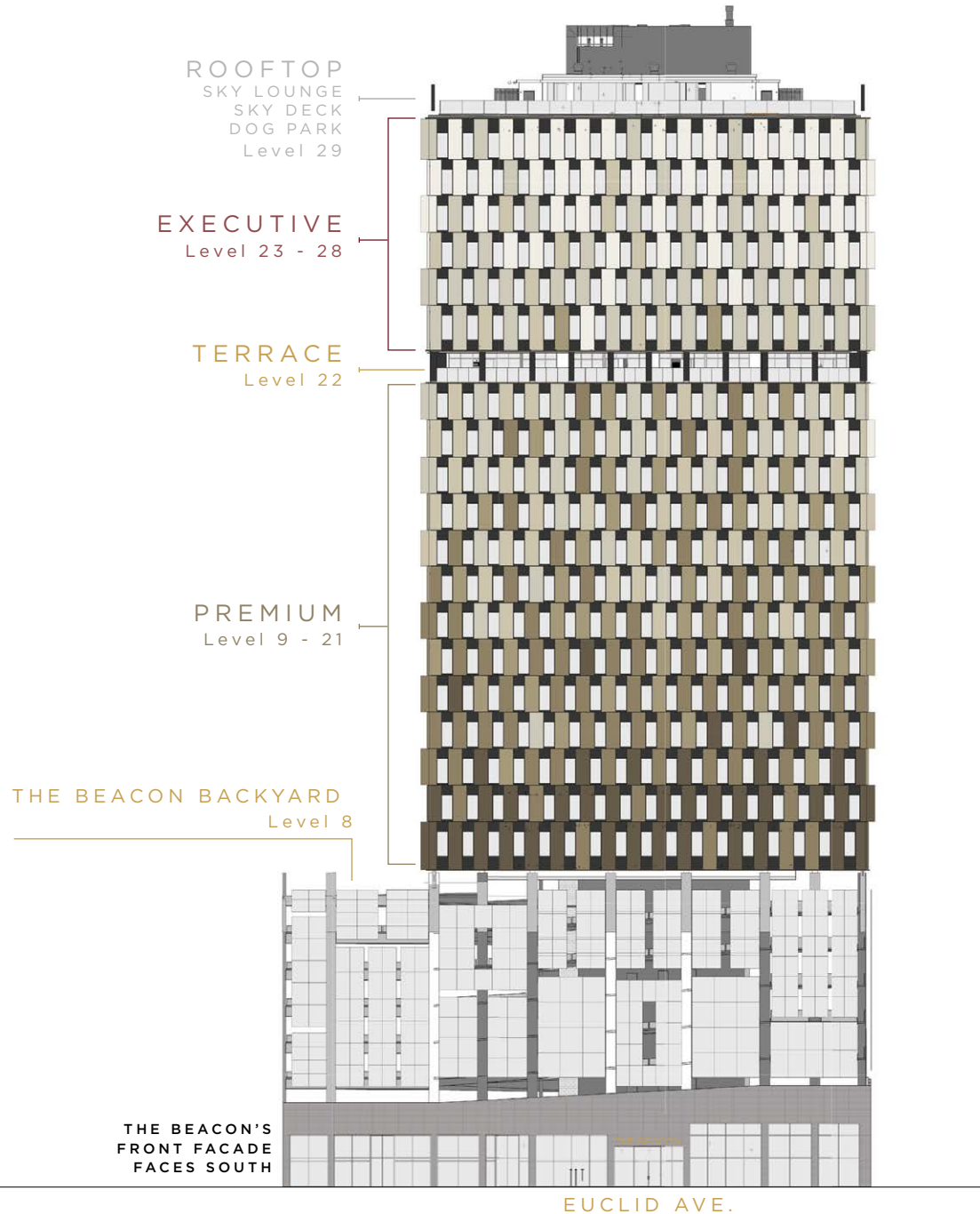
TWO BEDROOM • TWO BATHROOM
SERIES 03



ONE BEDROOM • ONE BATHROOM
SERIES 10

BE SELECTIVE

Take time to ensure your space accommodates your life's uniqueness. With several styles to choose from, The Beacon provides adaptable layouts for all preferences with resort viewpoints for the ideal style of living.





NORTH
VIEW



EAST
VIEW



SOUTH
VIEW



WEST
VIEW



BE WELCOMED

Our experienced management team is always available day and night to assist you with everything from food and mail delivery, to guest access. Our team will ensure you are well taken care of whether you are home or away.

PROPERTY AMENITIES

- Beacon Backyard: Pool Deck, Grilling Area, Fire pits & Lounge
- Bike Vault
- Building-wide Cable and Internet
- Cable and Internet Ready with Private Wi-Fi Network
- Coffee Bar
- Dog Spa
- EV Charging Stations
- Guest Suite
- Local Transit System
- LuxerOne Package Delivery System
- On-site Restaurants
- Rooftop Dog Park
- Rooftop Panoramic Sky Deck with Fire pits & Outdoor Lounge
- Rooftop Sky Lounge with full service kitchen
- State-of-the-art Fitness Center with Cardio Machines, Weight Bench and Strength Training Area
- Wellness Studio (Yoga, Spin) with Wellbeats On-Demand
- Walkable Downtown District

RESIDENT SERVICES

- Beacon Blackcard - Neighborhood Discount Program
- Business Services
- Monthly Calendar of Social & Community Events
- Monthly Newsletter
- Resident Services Concierge
- Resident Online Portal
- Referral Program
- Secure Mail Room
- Weekly Grab & Go Breakfast

UNIT FEATURES

- 7 - 10 Units per Floor
- Custom Room-Darkening Window Coverings
- Ecobee Smart Thermostat
- Expansive Open Floor Plan with 9-10 foot Ceilings
- Floor-to-Ceiling Windows
- In-suite Washer and Dryer
- Two Color Scheme Options: Blonde & Grey
- Unparalleled Views of Downtown & Lake Erie
- Walk-in Closet(s) with Shelving

ACCESSIBILITY

- Controlled Access
- Video Patrol
- Schlage Smart Lock System
- After-Hours Security Coverage
- Emergency Maintenance Services
- On-Site Dry Cleaning Drop Off
- Integrated Garage Parking

PROPERTY DETAILS

- Built in 2019
- 187 units/29 Stories

PET POLICY

- Cats and Dogs Permitted
- Up to 75 pounds Combined Weight • 2 Pet Limits

*IN SELECT UNITS



KITCHEN

- High-end Contemporary Finishes
- Oversized Island with Seating
- Modern Custom Cabinetry with Ample Storage
- Quartz Counter tops
- Stainless Steel, Smart Appliances
- Waterfall Island Counters*

BATHROOM

- Illuminated Mirrors*
- Floating Vanities with Storage
- Glass Shower Enclosures
- Dual Access from Bedroom & Living Space
- Private Bathroom for Primary Bedroom*

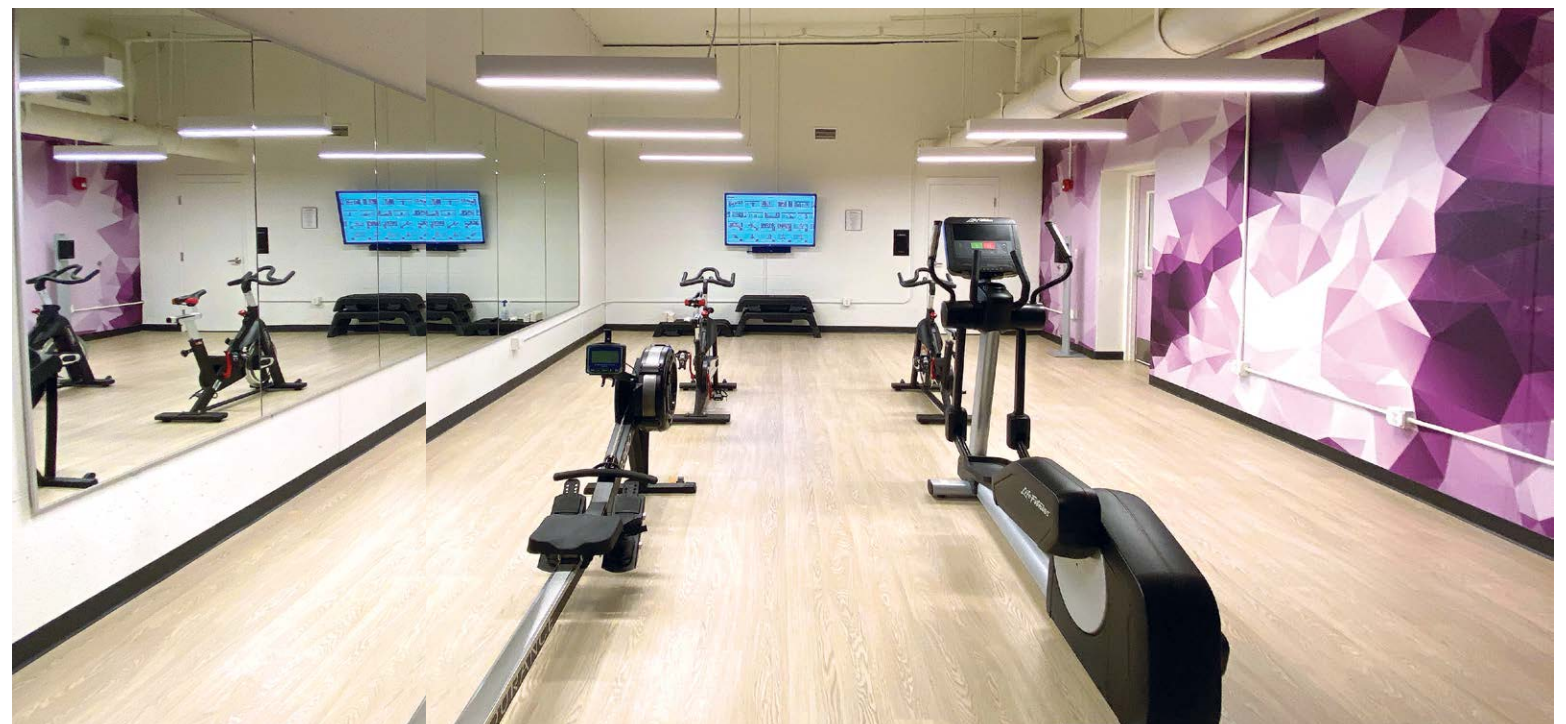
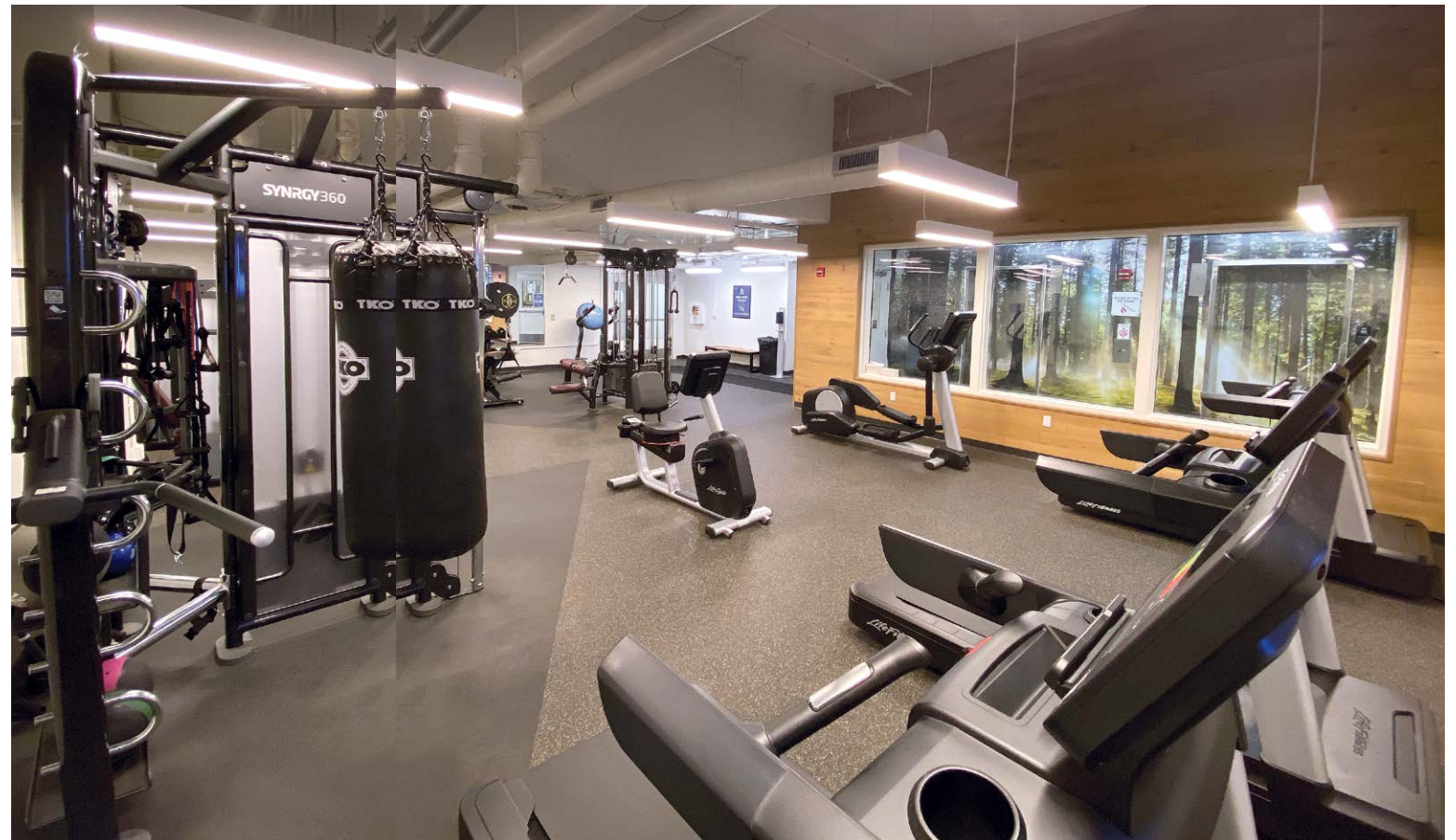


BE FIT

Continue to take part in all the activities you enjoy and make staying healthy in the heart of the city something to look forward to with our 24/7 state-of-the-art fitness center, private dog park and community fitness events.

WELLNESS CENTER

Ab Crunch Bench
Cross Trainer
Cable Combo Machine
Cable Machine
Exercise Balls
Free Weights
HD Television
Heavy Bag
Lat Pull Down
Leg Curl/Extension
Leg Press
Leg Raise
Medicine Balls
Recumbent Bike
Resistance Cables
Strength Training Area
Treadmills
Upright Bike
Weight Bench
Wellbeats™ On Demand
Wellness Studio
Yoga Mats





BE SOCIAL

Imagine a weekend morning in your perfect retreat to take in the sun poolside, or a warm afternoon to grill your favorite foods with friends and neighbors. After a day's work the Beacon Backyard is the place to relax on a cozy daybed or sit by the fire and enjoy the night.





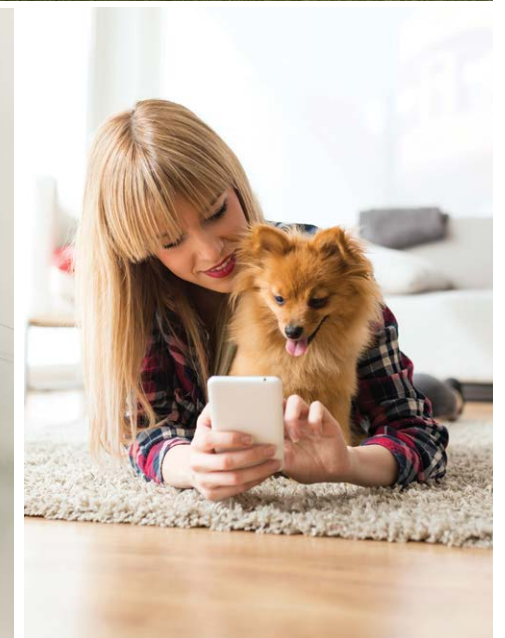
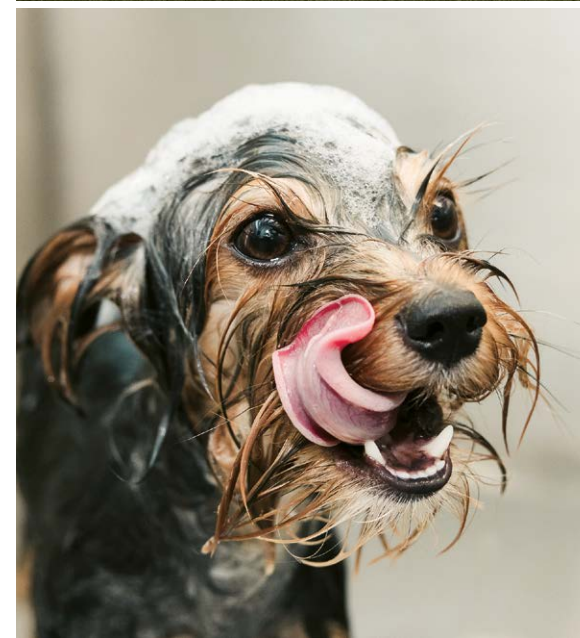
BE CONNECTED

The spacious social area, located on the 29th floor's thrilling rooftop Sky Lounge, provides the idyllic outlet for meetings, downtime and life's celebrations. With a full-service kitchen and plenty of space to host a wide variety of community events, gather with neighbors, work remotely, and stay connected.



BE A GUEST

Welcome your friends and family to a beautiful space for them to stay and relax. Elevate the visiting experience and host your loved ones in your very own guest suite with all the amenities and breathtaking views.



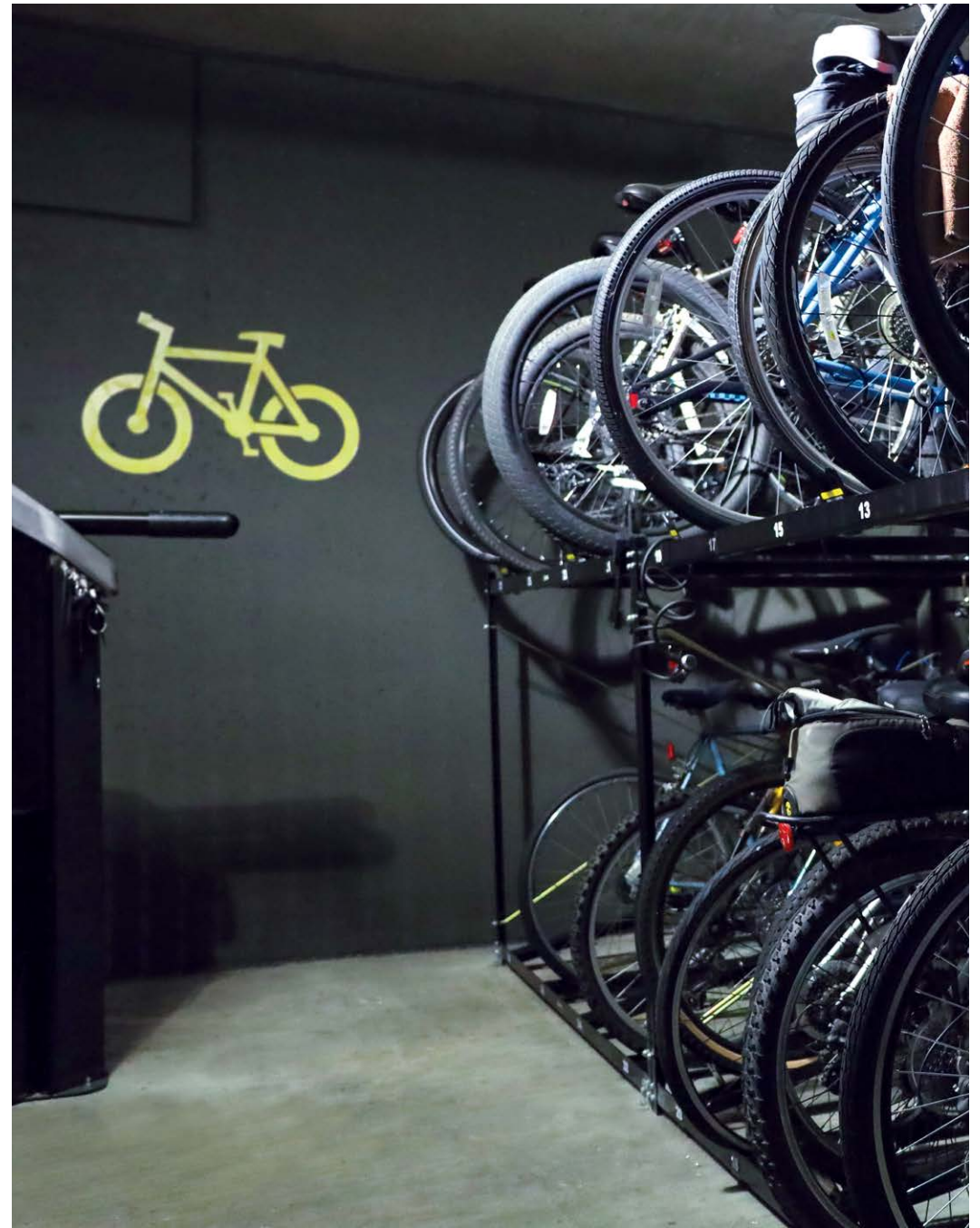
BE A GOOD COMPANION

Dog walking services are available to help ensure your pup is energized and well taken care of while you're away. The 29th floor rooftop dog park, accessible to all residents, provides your four-legged friend(s) room to roam, all in a private space amidst beautiful downtown views. The Dog Spa is available to pamper your pup and keep them looking and feeling fabulous. Rest assured that your faithful pooch can be bathed and groomed in a calm and safe environment.



BE ENERGIZED

Conveniently located charging stations make it easy to stay on the go. EV charging stations are readily available for residents in the fully integrated parking garage.



BE SECURED

Feel content knowing your bike is safe in our secure Bike Vault. With easy access and security, maintain your active, urban living lifestyle in a reliable and protected environment.

Lake Erie

DOWNTOWN



THE BEACON

C L E V E L A N D

⌘ A STARK ENTERPRISES AND DESSLER JOINT VENTURE

THE BEACON
515 EUCLID AVE
CLEVELAND, OH 44114

216.279.7470
BEACONCLE@STARKLIVING.COM
THEBEACONCLE.COM



STARKLIVING

⌘ A STARK ENTERPRISES COMPANY